

Quality Brood Stock

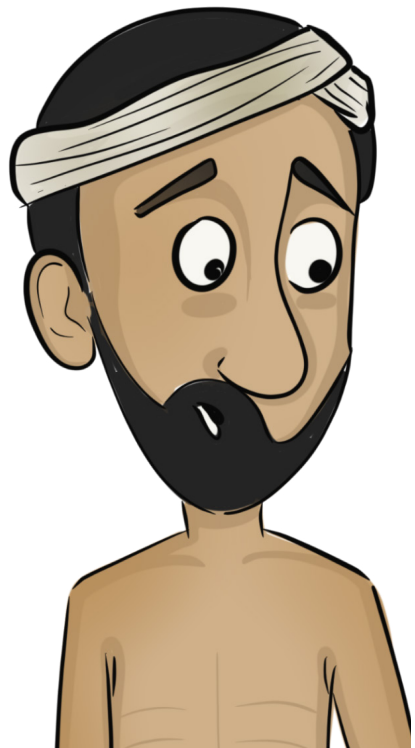
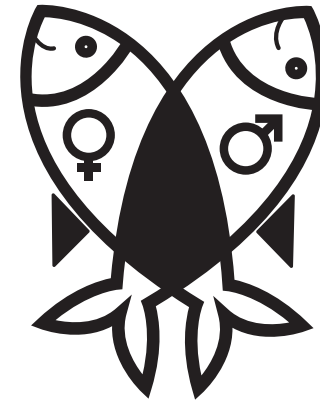
Do you know, selecting **good quality brood stock is vital** to have healthy hatchling production?



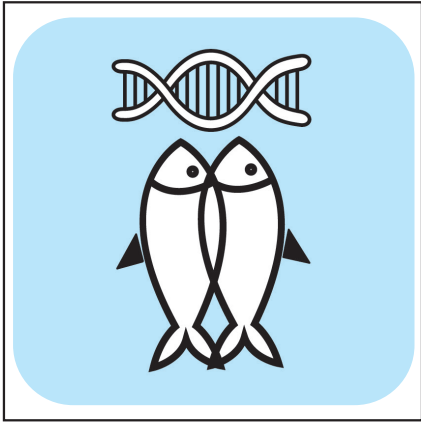
What is a brood stock, Baideo? And how helps in healthy hatchling production?

A brood stock or brood fish is a group of sexually mature male & female fishes which can reproduce & are used for breeding in captive condition for aquaculture.

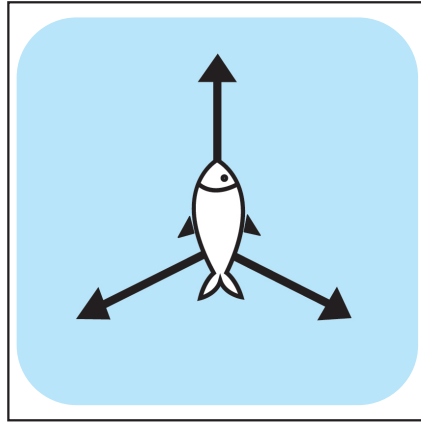
It is important to select brood stock which can produce good quality eggs & milt resulting in high fertilization & survival rate.



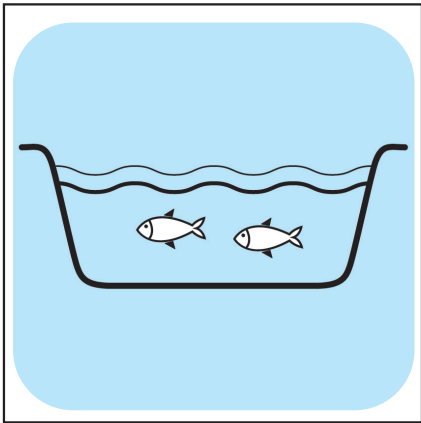
Factors Affecting Brood Stock Quality:



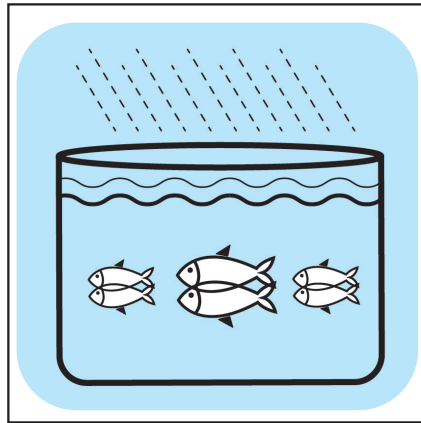
**Genetic Makeup (History)
of the Parents**



**Source/ Origin of Brood
Stock**




**Brood Stock Management
(Rearing)**



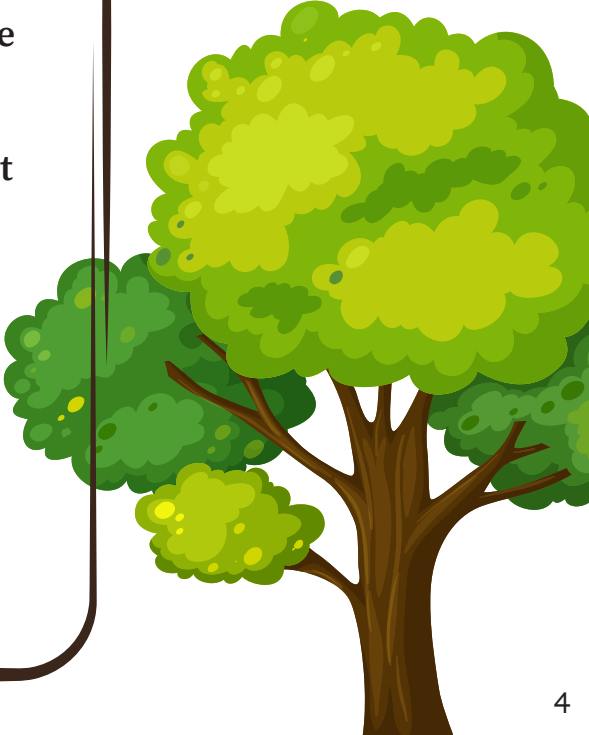
Breeding Methods

**We need to be mindful
of certain factors to
ensure quality of the
brood stock**

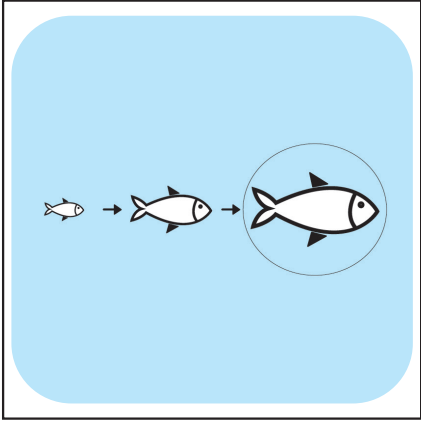




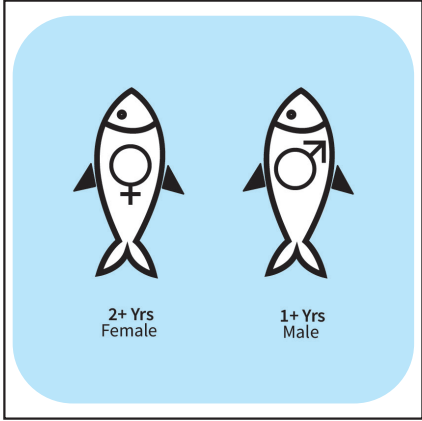
Here's what we can do
develop good quality
brood stock

- Identify good brood stock by history
 - Sourcing breeding materials from reputed hatchery/ farm
 - Select from different sources to avoid inbreeding
 - On farm rearing to assure required supply
 - Brood stock management like stocking, feeding, monitoring pond environment
 - Sexual segregation of brood stock 2-3 months prior to breeding season
 - Careful feeding of good brooder feed
- 

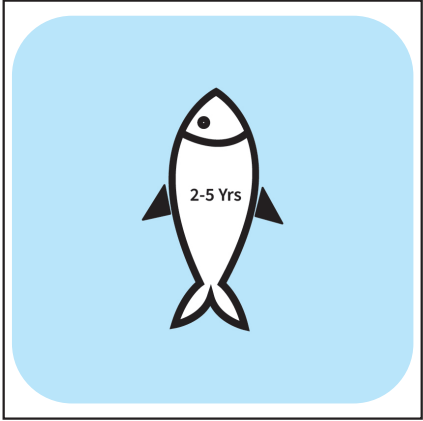
Okay, and how do we identify quality brood stock?



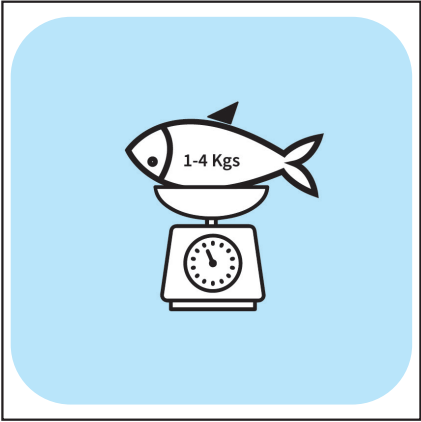
Select Fully Mature Individuals



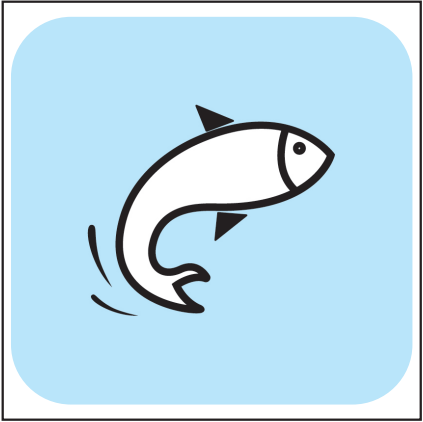
Maturity Age



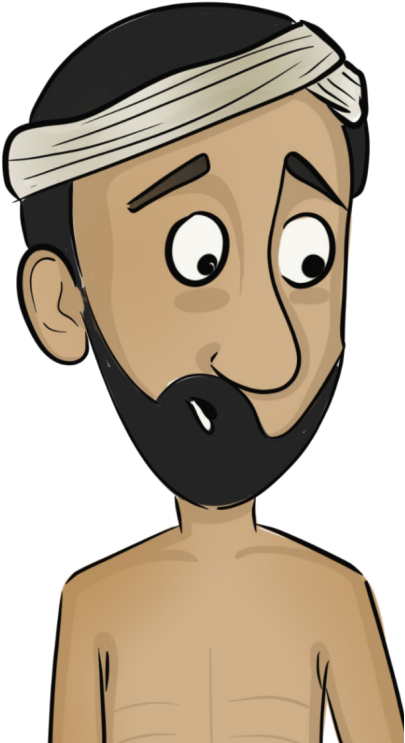
Ideal Brood Age



Ideal weight



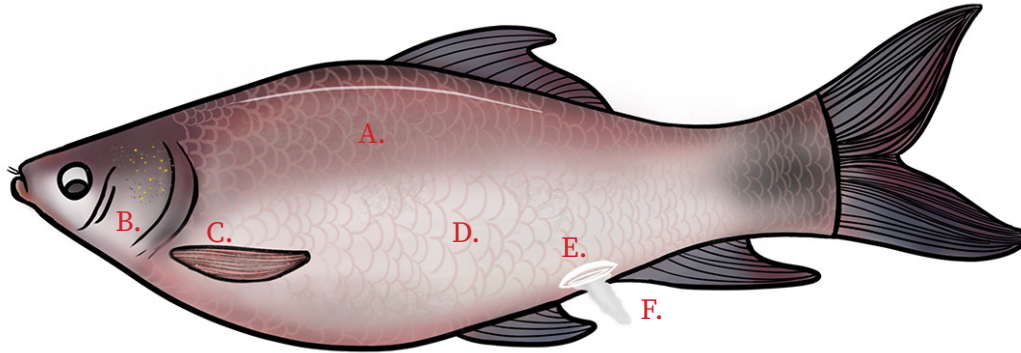
Healthy & Active Fish



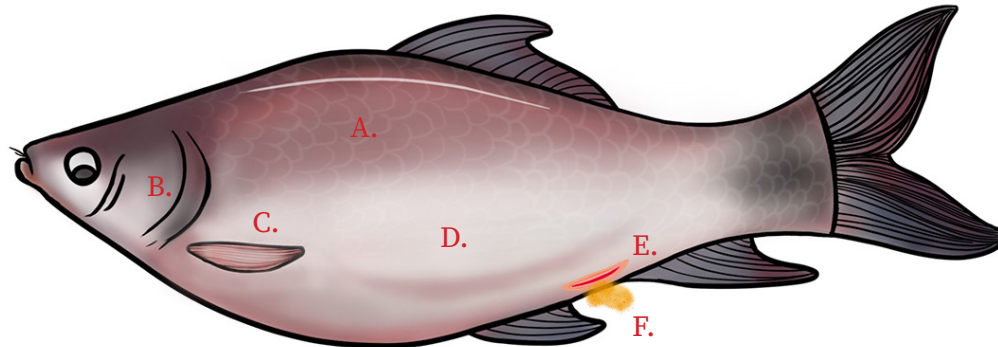
Characteristics of Male & Female Fishes.



Male:



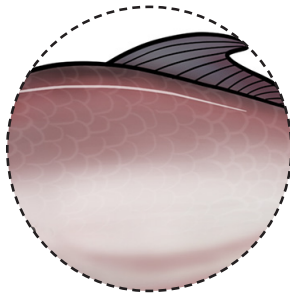
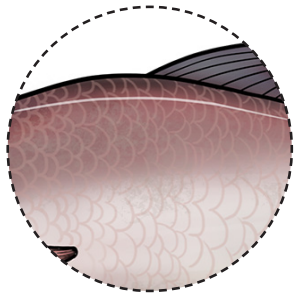
Female:



We can identify male & female fish by inspecting following characteristics:

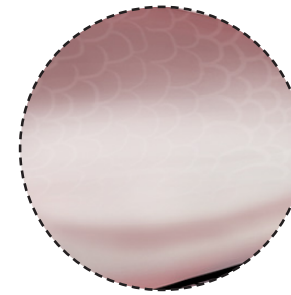
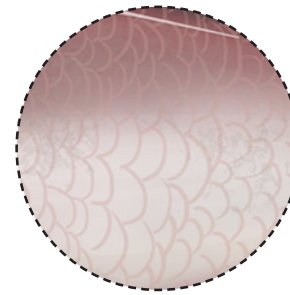
- A. Scales
- B. Operculum
- C. Pectoral fin
- D. Belly
- E. Vent
- F. Release of sex products

Characteristics of Male & Female Fishes.



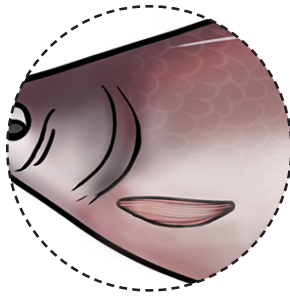
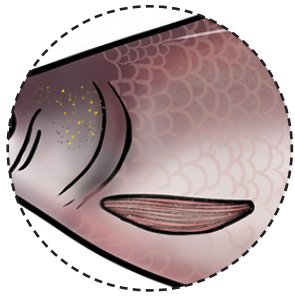
A. Scales

Male: Rough with sandy
Female: Smooth & silky



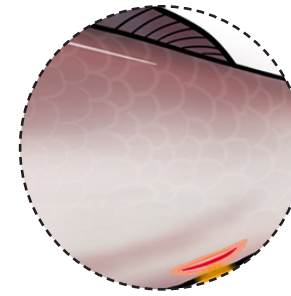
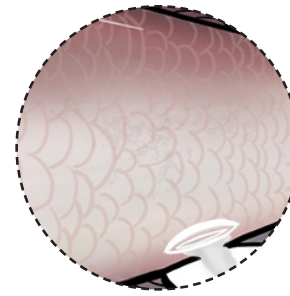
D. Belly

Male: Round & firm
Female: Swollen, bulging out on both sides



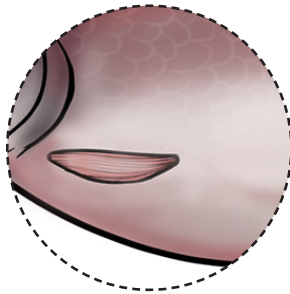
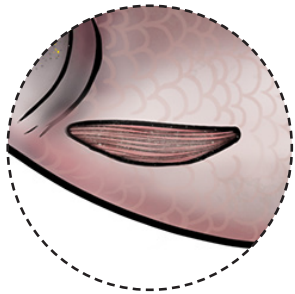
B. Operculum

Male: Rough to touch with tubercles
Female: Very smooth & no tubercles



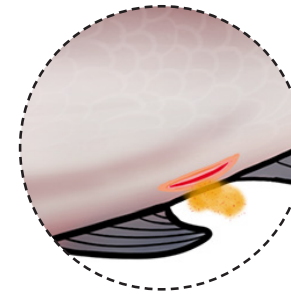
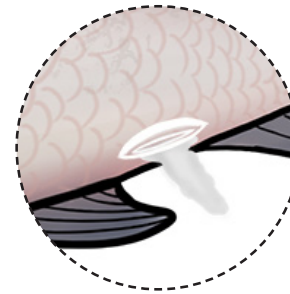
E. Vent

Male: Concave & white in colour
Female: Convex & reddish or pinkish



C. Pectoral fin

Male: Rough with sandy touch & slightly longer than females
Female: Smooth, short & slippery



F. Release of sex products

Male: On slight pressure on abdomen just above the vent, milky white fluid called milt oozes out
Female: On slight pressure on abdomen above vent, yellowish discharge or ova is released